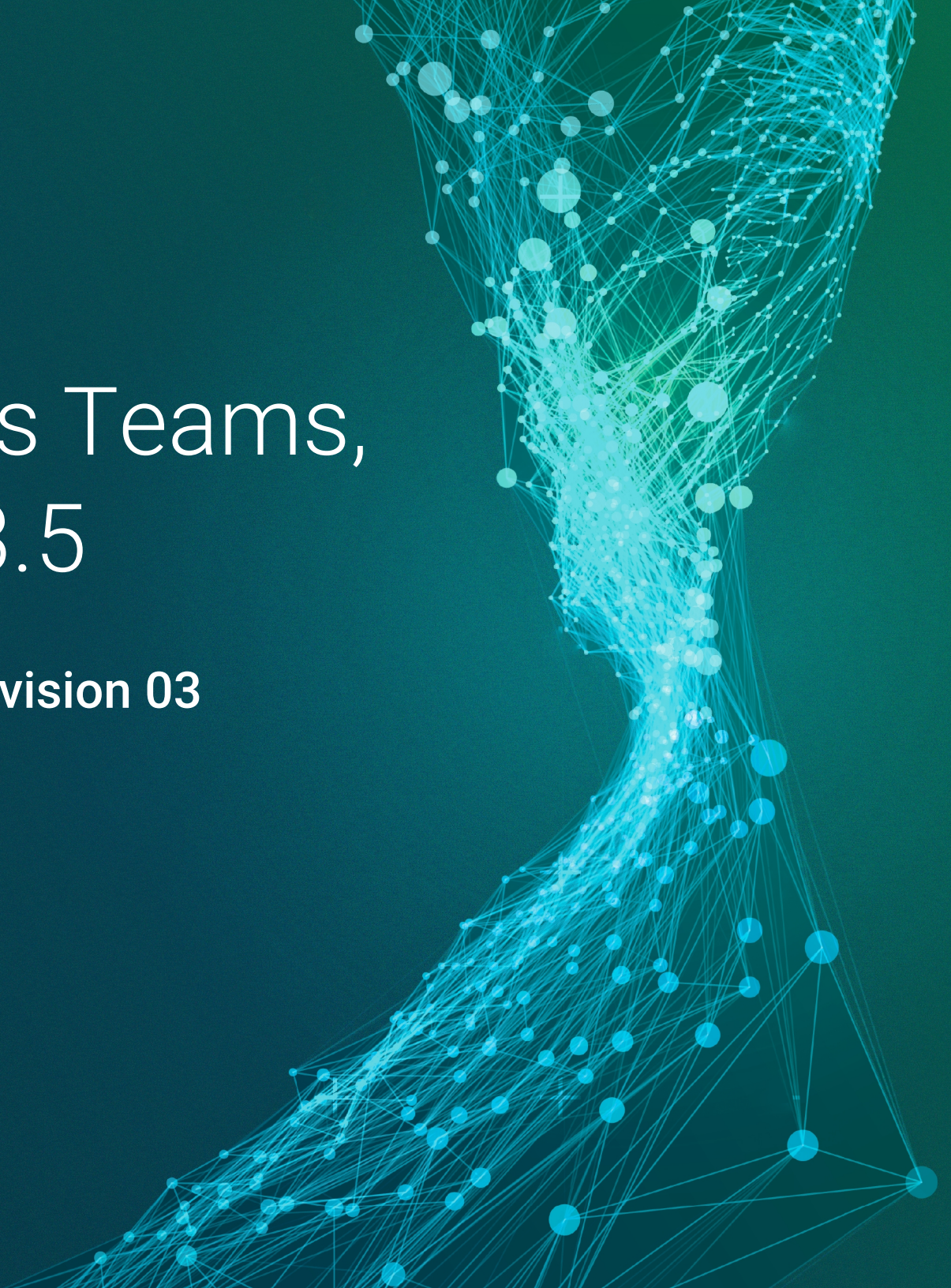


Agile Process Teams, version 2023.5

Release Summary | Revision 03



TraceLink, Inc. ("TraceLink") owns all right, title to, and interest in TraceLink's methodologies, processes, Applications, Software Programs and/or the licensed TraceLink documentation. The documentation is informational in nature and does not constitute a warranty of TraceLink. The licensed use of the TraceLink documentation is solely in conjunction with the licensed use of applicable TraceLink Applications and/or Software Programs. Any Reproduction or modification of the TraceLink documentation is prohibited. This documentation is confidential and can only be used by an authorized customer.

TraceLink, Inc. Copyright 2009-2023. All rights reserved.

Table of Contents

| | |
|---|---|
| Agile Process Teams, version 2023.5 | 1 |
| Release Summary Revision 03 | 1 |
| Copyright | 2 |
| Release Summary | 5 |
| What's new in the APIs | 6 |
| Release information | 6 |
| Revisions | 6 |
| API features | 7 |
| Enhancements to Incidents and Document Reviews | 7 |
| System features | 8 |
| Submit a Location's Recall Responses to TraceLink | 8 |
| <i>Impact analysis</i> | 8 |
| Review and Approve Recall Responses Submitted by Locations | 8 |
| <i>Impact analysis</i> | 8 |
| View All Recall Responses Submitted by Locations | 9 |
| <i>Impact analysis</i> | 9 |
| View the Details of Recall Responses Submitted by Locations | 9 |
| <i>Impact analysis</i> | 9 |
| Export Recall Responses in CSV Format | 9 |

| | |
|---|----|
| <i>Impact analysis</i> | 10 |
| Track a Recall's Progress Across All Locations | 10 |
| <i>Impact analysis</i> | 10 |
| Send Follow-Up Messages to Locations Based on Their Response Status | 10 |
| <i>Impact analysis</i> | 10 |
| View the Response Activity for a Recall | 11 |
| <i>Impact analysis</i> | 11 |
| View Recall Updates Made by the FDA or the Recalling Company | 11 |
| <i>Impact analysis</i> | 11 |
| Monitor Ongoing Recalls for a Company or Location | 11 |
| <i>Impact analysis</i> | 12 |
| Receive Emails and Notifications for Recalls | 12 |
| <i>Impact analysis</i> | 12 |
| Receive Recall Data for Public Recalls Initiated in the Last Year | 12 |
| <i>Impact analysis</i> | 12 |
| Communicate Subscription Rules for Public Recall Notifications to TraceLink | 13 |
| <i>Impact analysis</i> | 13 |
| Communicate Recall Responses to TraceLink | 13 |
| <i>Impact analysis</i> | 13 |
| Resolved issues | 13 |
| Known issues | 14 |

Release Summary

What's new in the APIs

Explore what's new in the Agile Process Teams, version 2023.5 release. To learn more about what's new in the Supply Chain Work Management, solution version 8.0 that provides the user interface for this app, see [What's new in the user interface](#).

Release information

This document describes the TraceLink capabilities included in the Agile Process Teams, version 2023.5 app release, which is available on Validation on 28 Sep 2023 and Production on 13 Oct 2023.

The following apps are impacted by this release and will be updated to the version listed:

- Agile Process Teams, version 2023.5
Solutions supported by this app version:
 - Supply Chain Work Management, solution version 8.0

The features below are in order of functional relevance (i.e. the typical order in which a user executes a function or task).

Revisions

| Date | Revision | Description |
|-------------|----------|---|
| 14 Sep 2023 | 01 | Initial version. |
| 28 Sep 2023 | 02 | <p>The following updates have been made since the previous revision was distributed:</p> <ul style="list-style-type: none"> • The Communicate Recall Responses to TraceLink system feature is added. |

| Date | Revision | Description |
|-------------|----------|--|
| | | <ul style="list-style-type: none"> • 2 issues are added to Resolved issues. • 0 issues are added to Known issues. |
| Oct 13 2023 | 03 | <p>The following updates have been made since the previous revision was distributed:</p> <ul style="list-style-type: none"> • The Production date is updated to 13 Oct 2023 in the Release Information section. |

API features

The following new or updated API functionality is included in this release.

Enhancements to Incidents and Document Reviews

Intuitive validation is added to elements that are associated with each other to prevent users from submitting unrelated or irrelevant information. For example, validation is added to the `incidentSubcategory` element to ignore any values entered if no value is entered for the associated `incidentCategory` element. This update impacts the following APIs:

- [Add Incident](#)
- [Edit Incident](#)
- [Add Direct Supplier Incident](#)
- [Edit Direct Supplier Incident](#)
- [Add External Manufacturing Incident](#)
- [Edit External Manufacturing Incident](#)

- [Add Document Review](#)
- [Edit Document Review](#)

System features

Submit a Location's Recall Responses to TraceLink

This feature includes updates to TraceLink's internal APIs which are leveraged by the UI to deliver the Submit a Location's Recall Responses to TraceLink feature in the Supply Chain Work Management, solution version 8.0 release.

Impact analysis

The impacts for this feature are the same as the [Submit a Location's Recall Responses to TraceLink](#) feature in the Supply Chain Work Management, solution version 8.0 solution release.

Review and Approve Recall Responses Submitted by Locations

This feature includes updates to TraceLink's internal APIs which are leveraged by the UI to deliver the Review and Approve Recall Responses Submitted by Locations feature in the Supply Chain Work Management, solution version 8.0 release.

Impact analysis

The impacts for this feature are the same as the [Review and Approve Recall Responses Submitted by Locations](#) feature in the Supply Chain Work Management, solution version 8.0 release.

View All Recall Responses Submitted by Locations

This feature includes updates to TraceLink's internal APIs which are leveraged by the UI to deliver the View All Recall Responses Submitted by Locations for a Recall feature in the Supply Chain Work Management, solution version 8.0 release.

Impact analysis

The impacts for this feature are the same as the [View All Recall Responses Submitted by Locations](#) feature in the Supply Chain Work Management, solution version 8.0 release.

View the Details of Recall Responses Submitted by Locations

This feature includes updates to TraceLink's internal APIs which are leveraged by the UI to deliver the View the Details of Recall Responses Submitted by Locations for a Recall feature in the Supply Chain Work Management, solution version 8.0 solution release.

Impact analysis

The impacts for this feature are the same as the [View the Details of Recall Responses Submitted by Locations](#) feature in the Supply Chain Work Management, solution version 8.0 release.

Export Recall Responses in CSV Format

This feature includes updates to TraceLink's internal APIs which are leveraged by the UI to deliver the Export Recall Responses in CSV Format feature in the Supply Chain Work Management, solution version 8.0 release.

Impact analysis

The impacts for this feature are the same as the [Export Recall Responses in CSV Format](#) feature in the Supply Chain Work Management, solution version 8.0 solution release.

Track a Recall's Progress Across All Locations

This feature includes updates to TraceLink's internal APIs which are leveraged by the UI to deliver the Track a Recall's Progress Across All Locations for a Recall feature in the Supply Chain Work Management, solution version 8.0 release.

Impact analysis

The impacts for this feature are the same as the [Track a Recall's Progress Across All Locations](#) feature in the Supply Chain Work Management, solution version 8.0 release.

Send Follow-Up Messages to Locations Based on Their Response Status

This feature includes updates to TraceLink's internal APIs which are leveraged by the UI to deliver the Send Follow-Up Messages to Locations Based on Their Response Status feature in the Supply Chain Work Management, solution version 8.0 release.

Impact analysis

The impacts for this feature are the same as the [Send Follow-Up Messages to Locations Based on Their Response Status](#) feature in the Supply Chain Work Management, solution version 8.0 release.

View the Response Activity for a Recall

This feature includes updates to TraceLink's internal APIs which are leveraged by the UI to deliver the View the Response Activity for a Recall feature in the Supply Chain Work Management, solution version 8.0 release.

Impact analysis

The impacts for this feature are the same as the [View the Response Activity for a Recall](#) feature in the Supply Chain Work Management, solution version 8.0 release.

View Recall Updates Made by the FDA or the Recalling Company

This feature includes updates to TraceLink's internal APIs which are leveraged by the UI to deliver the View Recall Updates Made by the FDA or the Recalling Company feature in the Supply Chain Work Management, solution version 8.0 release.

Impact analysis

The impacts for this feature are the same as the [View Recall Updates Made by the FDA or the Recalling Company](#) feature in the Supply Chain Work Management, solution version 8.0 release.

Monitor Ongoing Recalls for a Company or Location

This feature includes updates to TraceLink's internal APIs which are leveraged by the UI to deliver the Monitor Ongoing Recalls for a Company or Location feature in the Supply Chain Work Management, solution version 8.0 release.

Impact analysis

The impacts for this feature are the same as the [Monitor Ongoing Recalls for a Company or Location](#) in the Supply Chain Work Management, solution version 8.0 solution release.

Receive Emails and Notifications for Recalls

This feature includes updates to TraceLink's internal APIs which are leveraged by the UI to deliver the Receive Emails and Notifications for Recalls feature in the Supply Chain Work Management, solution version 8.0 release.

Impact analysis

The impacts for this feature are the same as the [Receive Emails and Notifications for Recalls](#) feature in the Supply Chain Work Management, solution version 8.0 release.

Receive Recall Data for Public Recalls Initiated in the Last Year

This feature includes updates to TraceLink's internal APIs which are leveraged by the UI to deliver the Receive Recall Data for Public Recalls Initiated in the Last Year feature in the Supply Chain Work Management, solution version 8.0 release.

Impact analysis

The impacts for this feature are the same as the [Receive Recall Data for Public Recalls Initiated in the Last Year](#) feature in the Supply Chain Work Management, solution version 8.0 release.

Communicate Subscription Rules for Public Recall Notifications to TraceLink

This feature includes updates to TraceLink's internal APIs which are leveraged by the UI to deliver the Communicate Subscription Rules for Public Recall Notifications to TraceLink feature in the Supply Chain Work Management, solution version 8.0 release.

Impact analysis

The impacts for this feature are the same as the [Communicate Subscription Rules for Public Recall Notifications to TraceLink](#) feature in the Supply Chain Work Management, solution version 8.0 release.

Communicate Recall Responses to TraceLink

This feature includes updates to TraceLink's internal APIs to asynchronously communicate recall responses submitted in Supply Chain Work Management to other TraceLink applications, such as Product Information Manager.

Impact analysis

The impacts for this feature are the same as the [Communicate Recall Responses to TraceLink](#) feature in the Supply Chain Work Management, solution version 8.0 release.

Resolved issues

The following issues are resolved in this release.

| ID | Interface | Issue Description |
|--|-----------|--|
| 33497: Unable to Change Sub Workflow Types for | API | When a new task is created, when selecting the Substate BlankState in the status dropdown, a validation error displays. An |

| ID | Interface | Issue Description |
|--|-----------|--|
| Object Type Task | | update is required to correct this behavior. This issue is resolved. |
| 34111: API productIdentifierValue Fails for NDC Values that Contain Dashes | API | Attempts to submit address blocks via the Exceptions API with all fields set to null return an error message stating that the country code is required. An update is required to update these fields automatically via the businessAddress and businessName fields. This issue is resolved. |

Known issues

There are no known issues in this release.